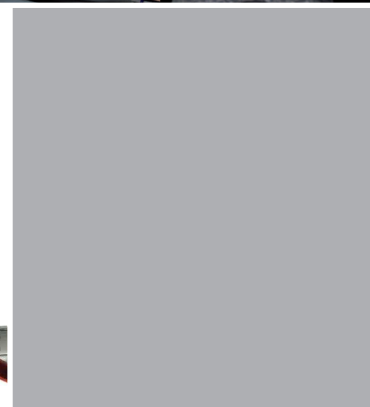
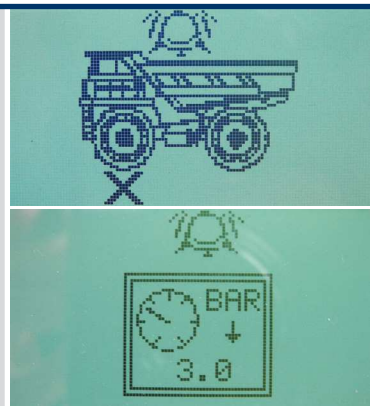


OTR TPMS

PU-171 GB-3

STAGE 1 & STAGE 2

NEW CONCEPT - NEW CAPABILITIES - NEW BENEFITS



OTR TPMS

Designed for large off-road vehicles. Accurately monitors and displays tire pressure and temperature while vehicles are in service and keep your tires running at optimum performance.



Benefits of OTR TPMS

- Increased the equipment uptime.
- Increased tire life.
- Improved fuel efficiency.
- Increased safety.
- Reduced cost of maintenance.
- Improves the life of the tire casing to enable retreading.
- Allows for the monitoring of the tire assets.
- Facilitates the compilation of database.

SCOPE OF OFFERING OTR TPMS

- Best system to prevent tire damage linked to low pressure or high temperature: check of pressure/temperature and real-time alerts of possible deviations from standard parameters.
- **Stage 1: On-board monitoring module**
 - Transmit the information (pressure / temperature / alarm) to the dashboard via an onboard display.
 - Store the information for later analysis (PC application).
 - Can interface with all the mine dispatch and tire management systems.
- **Stage 2: Communication module**
 - Transmit the information to the dispatch room or to the tire service provider through a Wireless option for communications which include GPRS, Wi-Fi comms dependant on local availability.
 - Send e-mail alarm messages.
 - Allows the user to change the truck parameters remotely.
 - Visualisation of the cold fill pressure.

OTR TPMS : A REVOLUTION

■ Stage 1:

- High technology sensors mounted on specially designed patch applied to the inside of the tire.
- Waterproof DDRM antennas fitted outside of the cab.
- Control box in aluminium fits in various locations inside the cab.
- Display with USB port:
 - . Pressure and temperature data displayed + alarm
 - . Data collection by simply plugging /unplugging USB memory stick
- PC Application for easy data access.

■ Stage 2:

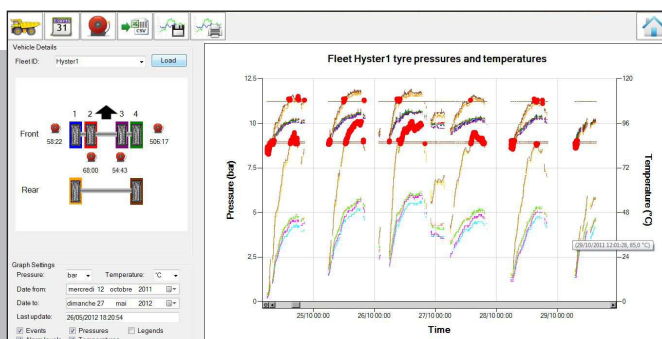
- Communication controller with SIM card (worldwide compatibility)
- Website for easy live data access.

Technical Data:

- Pressure Range: 0,1 to 12 bar (1,45 to 174 psi / 10 to 1200 kPa)
- Pressure accuracy: +/- 2 %
- Temperature measurement range: -40°C to 100°C*, peaks to 120°C* (-104 to 212 °F*, peaks to 248°F*)
- Unique sensor ID Code
- Sensor transmission: Every 5 minutes (each minute under alarm)
- Transmission Frequency: 433,92 Mhz
- Operating range on controller display: -45°C to 60°C (-113 to 140 °F)
- System ready to add: GPRS, VHF/UHF, all dispatch and communication system
- Current consumption: 0,1 A at 24 V
- GPRS (stage 2 only): according to GSM coverage.

* Short term exposure.

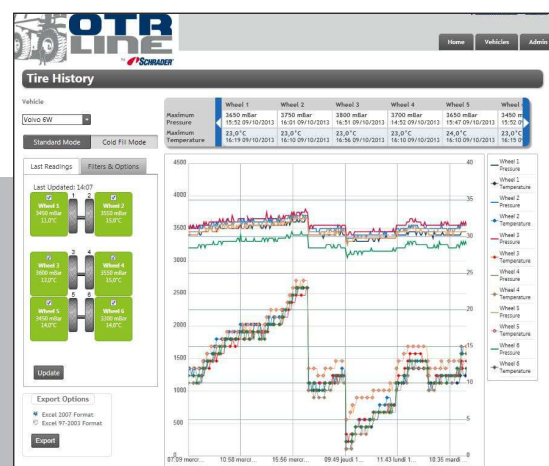
** Use only the memory stick delivered in the kit.



OTR PC APPLICATION

Stage 1: On-board monitoring module

Intuitive software for system setting and data viewing (detailed information available upon request).



OTR WEBSITE

Stage 2: Communication module

Live data viewing all over the world (only an internet connection needed)
Changing parameters
Visualization of the cold fill pressure.

OTR-TPMS Kits

Kit content includes	OTR-TPMS Stage 1	OTR-TPMS Stage 2
6 sensor mounted on patch	✓	✗
2 DDRM Antennas with cables	✓	✗
2 DDRM installation sets for antennas	✓	✗
1 Control box	✓	✗
1 Display	✓	✗
1 Display stand	✓	✗
1 Display cable	✓	✗
1 Power cable	✓	✗
1 USB cable	✓	✗
1 USB memory stick	✓	✗
1 GSM antenna	✗	✓
1 GPS antenna	✗	✓
2 Installation sets for antennas	✗	✓
1 External sensor	✗	✓
1 communication controller	✗	✓
Use and installation procedure	✓	✓

Stage 1: On-board Monitoring



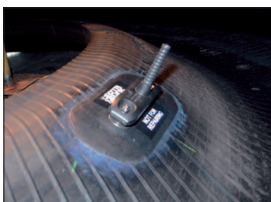
Stage 2: Communication module



Stage 1 (on-board module) is needed to allow stage 2 (communication module) installation.

Sample of application

Sensor mounted on tire



Stage 1 waterproof DDRM antennas



Stage 1 display and control box



Stage 2 GSM/GPS antenna



Stage 2 communication controller



Schrader s.a.s - B.P 29 - 48, rue de Salins
25301 Pontarlier cedex - France
Tel.: +33 (0)3 81 38 56 56 - Fax.: +33 (0)3 81 38 56 81
resale.info@schradet.fr
www.SchraderInternational.com

