

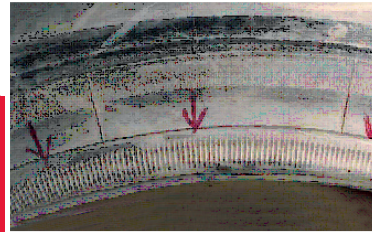
Tech Bulletin

Nr 06
April 2025

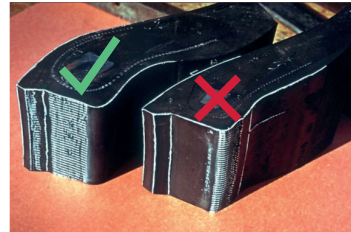
OTR SPECIAL EDITION



RESULT OF THE NON-RESPECT OF THE MOUNTING - REMOVAL INSTRUCTIONS



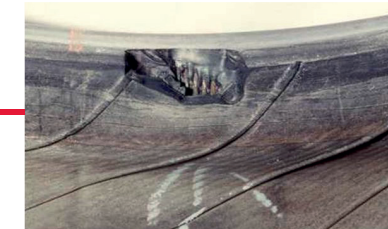
Bad positioning of the bead on the rim



Hammer impact marks



Use of non-compliant equipment
= DEFORMATION OF RIM PARTS



Bead deterioration and tearing
UNSUITABLE TOOL
= RISK OF SCRAPPED TIRE



SCHRADER SAS OFFERS AN OUTSTANDING RANGE OF DEDICATED TOOLS AND PRODUCTS

1 OUR BESTSELLERS FOR MAINTENANCE



SEALS
"O" TYPE

TIRE MOUNTING AND REMOVAL



R-5084-0

"Tigre" Grease
Lubricating effect
Contains glycerin



66045-67

T-Grease
Contains water



65686-67

DETAGEL
EM lubricating gel



61537-67

MAXIGEL
Mounting and inflating gel for EM tires



2 DEDICATED TOOL

FM BOX



KOUSMA 66015-97



HYDRAULIC PUMPS



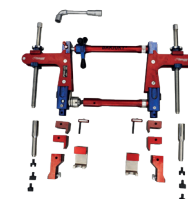
SHUTTLE-T 66017-97



TALLMA 61297-97



BARJUKY 2 : 61362-67



3 TAILOR-MADE SUPPORT

SCHRADER'S EXPERTISE TO TRAIN AND REINFORCE YOUR SKILLS



Training at our plant or on site
Adaptable content

MORE INFORMATION ON TRAININGS

